

The Rotary Club of Cooma Inc.

The Secretary

PO Box 14
COOMA NSW 2630

Phone: 02-6452-2241

E-mail: coomarotary@home.netspeed.com.au

Web: www.coomarotary.net.au

MEETINGS:

We meet every Wednesday

6:00pm for 6:30pm at

Dodds Hotel

94 Commissioner Street Cooma

THIS WEEK'S ATTENDANCE: 31 out of 50 = 62%

VISITING ROTARIANS: Nil

GUESTS: Alison (David H), Ron Hackney (Club), Caroline Fox (Katrin H), Ryan and Georgie (Ashley C).

APOLOGIES: Kevin D, Graham F, Richard L, President Pamela, Lou M.

LEAVE: Monica A, Peter A, Tom B, Jim H, Kym L, Colin and Cheryl M.

SICK LIST: Marko R and Claire N

WE ALSO MISSED: Julie J, Alan D, Ken P.

MAKEUPS: Nil

Duty Roster June and July

Thought of the Week	Fellowship	Attendance
Alan Dodd	Margaret Echarri and Claire Neumeyer	June - Graham Hope and Kevin Dunne July - David Epstein and Neil Brown

Property	Introduction	Markets
June - Brian Jefferies and Patrick Kwan	Ashley Constance	June - Steve S, Tony S, Katrin H, Rob S, Alyson H- J, PA
July - Tom Bellgard and Graham French	Vote of Thanks Ken Dane	July - David H, Chris A, Monica A, Lis A, Rob S, Alyson H-J, PA

SOME SIMPLE RULES ABOUT ROSTERS

GENERAL: Members rostered on and not able to attend are to make arrangements with another member to take their place.

MARKETS: Those nominated to tow the caravan or chuck wagon are to be at the Rotary shed no later than 8am. Ensure you get the key to the shed from David Holgate PRIOR TO THE EVENT SO THE EQUIPMENT CAN BE SET UP EARLY. If you are unable to tow the van or chuck wagon PLEASE ASK SOMEONE WHO CAN, or advise David Holgate before the event. Others nominated should be at the Park by 8.45am.

The contact number for making apologies and for notification of guests for dinner meetings will be to Kim Adams. Phone 6452 1488 prior to 4 PM on Tuesday afternoons. You may also email Kim; kadams@coomalaw.com.au



Weekly Bulletin



The Rotary Club of Cooma Inc.

Earthquakes - Dr Ron Hackney

Dr Ron Hackney was introduced by his mother, Katrin Hackney, who stated that Ron went to Monaro High, then to ANU where he obtained a degree in Geology, with first class honours, a NZ Master Degree, had two trips to Antarctica, PHD in Perth, has been involved in research and lecturing in Berlin and Kiel in Germany and visited the Andes in South America. Ron opened his presentation on two recent earthquakes, one at Haiti on 12 January, a magnitude of 7.0. No tsunami, with strike-slip faulting and Maule on 27 February with a magnitude of 8.8, tsunami-trust faulting (subduction zone). The Richter Scale that we had all heard about, but didn't know much about, is no longer used at moment magnitude, based on energy released = rock strength x rupture areas amount of slip. He also had some overviews of the destruction caused by these two earthquakes. Ron then said earthquakes occur where bits of the earth crust move past each other, and then explained: * strike slip faulting - sideways movement faulting-sideways movement, * normal faulting - downward movement, * thrust faulting - upward motion. His overviews showed maps of the world highlighting areas of earthquakes with magnitude of 5 since 1983 and also tectonic plates on these maps. Also a map of Australia which showed the largest at Mee-



Ron Hackney



Intro by Katrin

Issue: 2 June

Items of special interest:-

- June - Fellowship Month
- July - Literacy Month
- August - Membership Extension Month
- September - Youth Activities Month
- October - Vocation Service Month
- November - Rotary Foundation Month
- December - Family Month
- January - Rotary Awareness Month

Inside this issue:

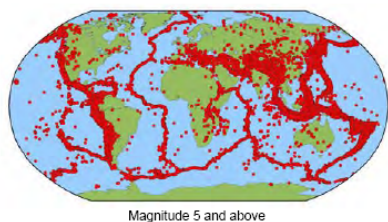
Earthquakes cont.	2
Member Happenings	2
News & Gallery	3
Club Rosters	4



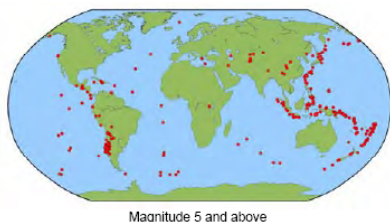
Earthquakes cont.

berrie WA in 1941 magnitude of 7.2. He did say that sands have greater reaction to these movements than solid ground. Ron finished up with a report on the recent Artie volcano and the problems that were caused by the ash that spewed out of it. A Boeing 747 uses 150 tonnes of air per minute per engine and the danger that can be caused by this ash clogging the engine. Also the Newcastle earthquake of few years ago was mentioned and the feeling of people in that area.

Earthquakes since 1973

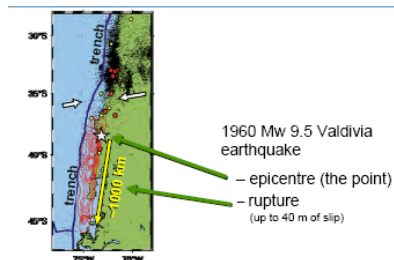


... so far this year



David give thanks

The biggest earthquake ever...



Thought of the Week - Anon

It's a shallow life that doesn't leave a few scars.

Member Happenings

Wedding Anniversaries

Graham and Helen French - 2 June

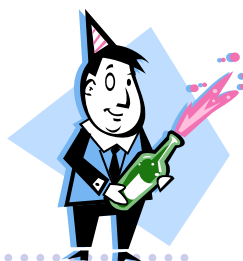
Birthdays

Kevin Dunne - 6 June

Brian Jeffries - 8 June

Chris Adams - 12 June

The Club extends our best wishes to you all on your special day.



Gallery



Caroline Fox, our returned GSE Arizona team member, gave us a brief report on her trip, we will have a full report next month. Caroline came along because she went to school with Ron.

News

NZ TWIN EXCHANGE PROGRAM John Clarke informed the club of the students who have been selected: Elle Walters of Dalgety, Samantha Johnston of Numeralla, Louisa Wall of Cooma, Lawrence Redmond of Berridale, Hamish Toohey of Cooma. From NZ: Fransan Amosa, Jessica Forester, Marie Soccer, Denial Daza and Jerome Ipinu. The host families have already been allocated. However, as Owen Barlow and the Deputy head of One Tree College will also be coming, John requires host families for them for a few days.

KEMABOLO PROJECT Neil Brown advised that Marnie Stewart and some members of her sewing club are collecting sewing machines to send to PNG and fund raising to send a couple of students to assist with lessons.

RED SHIELD APPEAL David Holgate thanked all volunteers who assisted with the collection last weekend in the rain.

Next week's program: Rot. Anton Pemmer
GSE

Following week: Club Assembly
Planning for 2010/2011 - No guests please

Bulletin Reporter — Des Trute
Bulletin editor & production - Irene Shirvington